

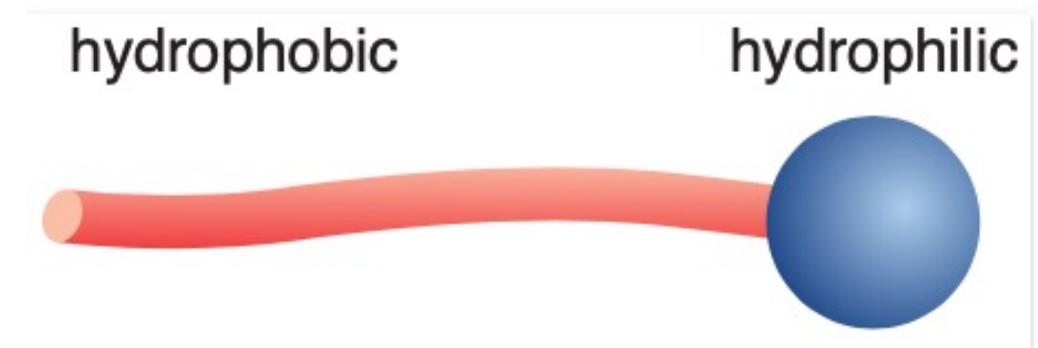
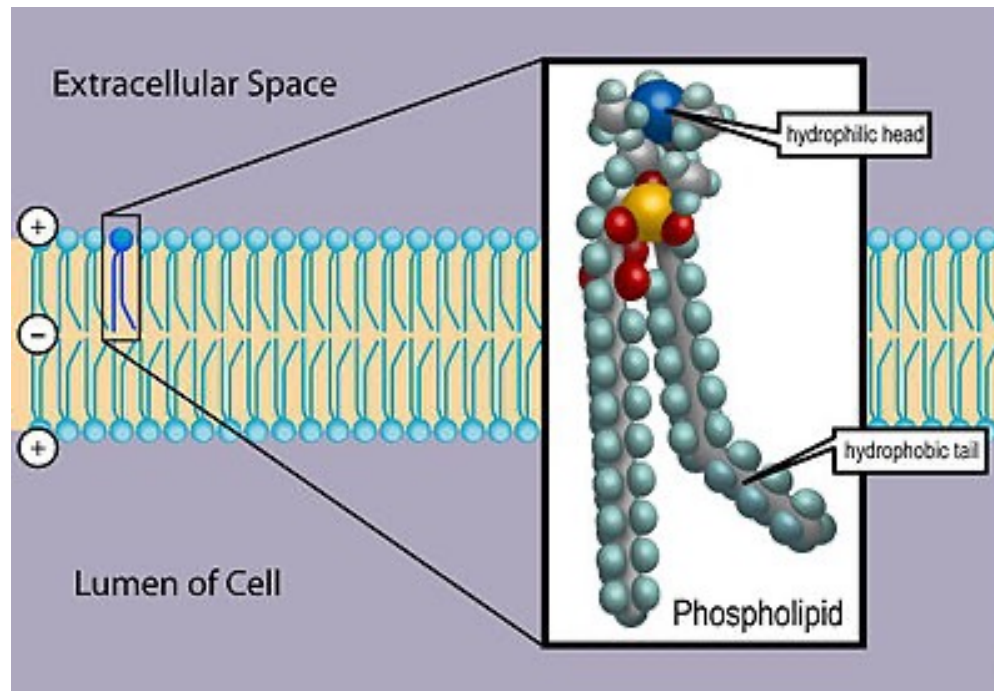


NANNIC



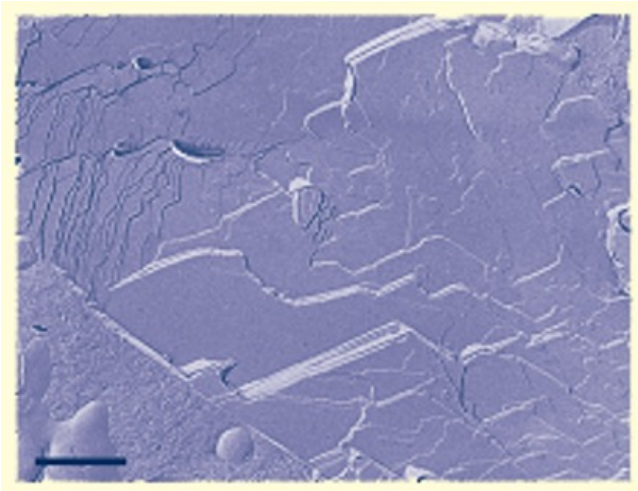
NANNIC PRODUCT TRAINING

NANNIC CREAM BASE = PHOSPHOLIPIDS ≠ SURFACTANTS.

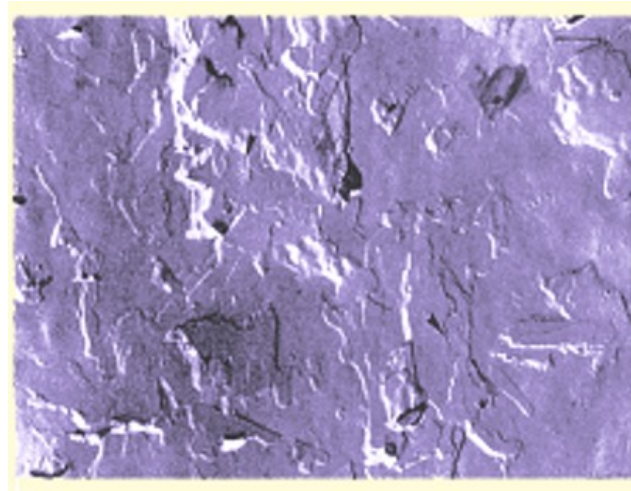


NANNIC CREAMS IDENTICAL WITH OUR DOUBLE HYDRO LIPID BARRIER

COMPARISON STRUCTURES

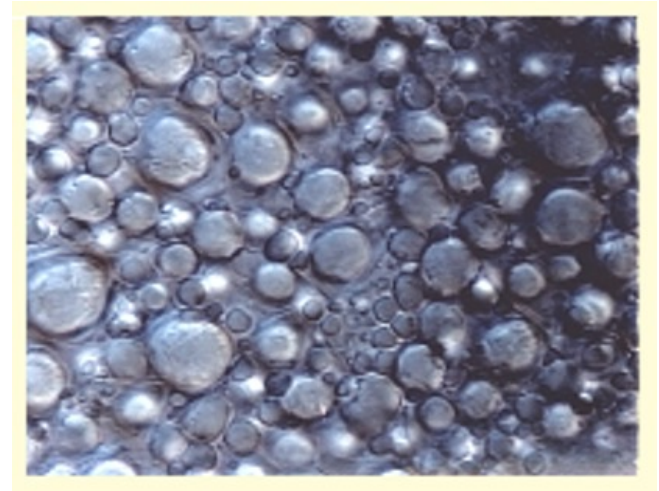


NBE basic cream



Stratum Corneum

Source (journal of investigative dermatology)



Commercial creams
(1000 x LM)

NANNIC BARRIER CREAM (SALON)



- Stimulates cell division and collagen synthesis
- Soothes the skin and reduces redness
- Prevents scarring
- Has an anti-inflammatory effect
- Improves skin elasticity
- Fades small and deep wrinkles
- Improves complexion
- Supports the skin's self-healing mechanism
- Prevents oxidative stress in tissues

Lecithin: Improves penetration of the active ingredients.

Panthenol (pro vitamin A): softens the skin and acts as an Antioxidant.

Biosaccharide Gum-1: provides hydration, makes skin soft and supple, improves cellular functions.

Copper Tripeptide-1: restores skin, is anti-inflammatory, soothes scars, accelerates wound healing and acts as an Antioxidant.

NANNIC EPITHELIUM+ (SALES)



To quickly restore the skin after certain aggressions on the skin use the EPITHELIUM+

Aggression such as e.g.: laser hair removal, wax hair removal, dermabrasion, sun damage, dry and rough patches ...

It contains **Copper tri-peptide** that stimulates wound healing and activates collagen growth. It acts on epidermal stem cells in the basal layer, thereby increasing tissue repair.

10 days to use as a home product after treatment.

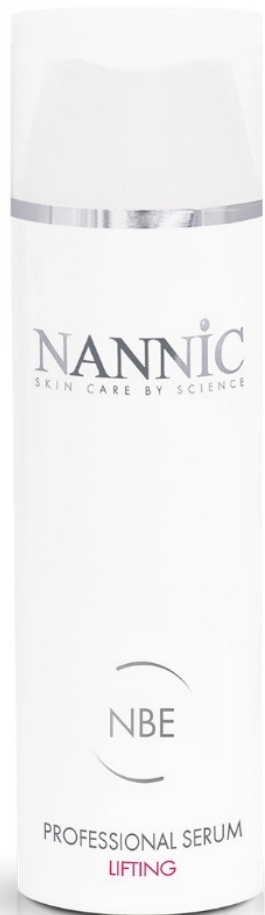
Very nice results with eczema and psoriasis



NANNIC BEAUTIFYING ENERGY (NBE) SERUMS



NANNIC NBE LIFTING



- Acts as a non-surgical facelift by stimulating the formation of new collagen and elastin
- Reduces wrinkles
- Stimulates skin reunification to the muscular system

Glycosaminoglycans: works anti-wrinkle, balances moisture, strengthens through better collagen synthesis

Algae extract: works anti-ageing, firms the skin, drains cellular waste, reduces inflammatory redness

Floral extract: protects fibroblast growth factor B, anti-wrinkle, increased synthesis of collagen, elastin & endogenous hyaluronic acid.

Organic sillicium (Chlorella): strengthens connective tissue, prevents and reduces stretch marks and scars, improves cell communication

Cannabis Sativa seed oil: improves skin barrier function, better moisture retention

NANNIC NBE REDNESS (COUPEROSE)



- Protects the extra cellular matrix
- Regulates the structure elements of the ECM (filagrin, fibronectin, elastin, collagens.)
- Increases cell to cell communication and oxygenation.

Glycosaminoglycans: Brings moisture balance, and reduces dark circles.

Integrin: LMW oligopeptide from pure rice proteins. Regulates the production of filagrine, fibronectin, elastin and some collagens. Anti-inflammatory, increases suppleness.

Squalane: Enhances moisture retention and antioxidant.

Cannabis Sativa seed oil: improved barrier function of the skin, better moisture retention.

To be used for: rosacea, redness, irritated skin.

NANNIC NBE FLACCID SKIN



- Tense the skin by stimulating cell renewal
- Stimulates the formation of collagen and elastin
- Improves moisture management
- Is a strong antioxidant

Phosphatidyl choline: improves transport of active ingredients.

Decarboxy Carnosine: restores the cell membrane, is a strong antioxidant of hydrophilic and lipophilic targets, counteracts glycation. Restores actinic premature ageing.

Organic silicon : Strengthens connective tissue and has a firming effect.

Soya Isoflavone: works lifting, boosts collagen, tightens skin.

To be used for: sagging skin

NANNIC NBE STRIAE



- Increases collagen production in the skin
- Improves elasticity
- Improves connective tissue
- Stimulates cicatrisation
- Works very well on deep wrinkles (can also be used preventively)

Organic silicone from freshwater algae: restores connective tissue (elastin & collagen), prevents scarring, repairs existing scars, firms the skin, acts as an antioxidant.

Squalane: Improves moisture retention and elasticity.

Cannabis Sativum seed oil: essential oil rich in polyunsaturated fatty acids, makes skin soft and supple and improves cellular functions.

Hydroxiprolin & lisine: Essential amino acids for protein formation in collagen.

To be used for: stretch marks on the body, facial scars and on deep wrinkles.

NANNIC NBE IMPURE SKIN



- Increases collagen production in the skin
- Works anti-microbial.
- Stimulates cicatrisation
- Acts on excessively intense sebum secretion

Organic silicone from freshwater algae: Restores connective tissue (elastin & collagen), prevents scarring, repairs existing scars.

Lavender extract: naturally anti-bacterial.

Hop extract: Phyto hormone activity, regulates sebum secretion.

Red soapwort extract: gently cleanses deep into pores.

Marine elastin: Prevents formation of permanent scar tissue.

To be used for impure and acne skin

NANNIC NBE HYPERPIGMENTATION



- Inhibits the command that triggers the pigment cell
- Reduces the cell's tyrosinase activity (enzyme that can lead to the formation of dark pigment)
- Inhibits the distribution of melanosomes to keratinocytes
- Has a strong reducing effect on free radicals
- Works normalising age spots, post inflammatory hyper-pigmentation and melasma

Niacinamide:

Fitic acid:

Bisabolol Complex that prevents excessive pigmentation.

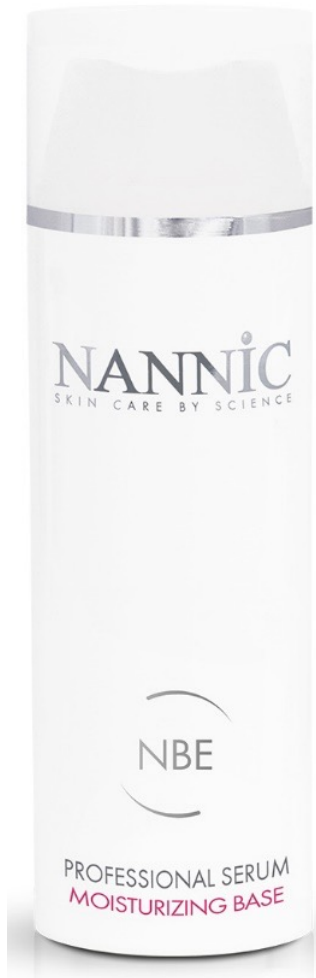
Vitamin C

azeloglycine

Garden cress: protects the skin, acts as a strong anti-oxidant and prevents the spread of excess pigment (phagocytosis)

Use for age spots, melasma for even skin tone

NANNIC NBE BASE



- Lamellar base without additional actives
- Extremely moisturising

Phosphatidyl choline: improves transport of active ingredients.

Glycosaminoglycans: reduces Rosacea, telangiectasias, blue spots, balances hydration.

Cannabis Sativa seed oil: improved barrier function of the skin, better moisture retention.

Squalane: skin-specific emolient.

Ceramide III: improves the skin barrier.

To be used as support for serum deployment.

NANNIC NBE CELLULITE



- Reduces both the amount of mast cells and the release of granules from the mast cells
- Activates the lypolise
- Improves membrane function (in fat cells)
- Is a strong antioxidant that improves metabolism
- Works anti-inflammatory
- Stimulates the lymph

Organic iodine: reduces mast cells, reduces the release of granules from mast cells (histamine), activates lypolise, improves membrane function in fat cells.

Curcuma extract: is an antioxidant and has anti-inflammatory effects.

Cinnamon extract: improving metabolism.

Ginger extract: promotes circulation and has anti-inflammatory effects.

To be used for cellulite

NANNIC NBE FAT REDUCTION



- Stimulates natural lipolysis
- Converts fat into energy
- Fat is burnt as in a vigorous sporting effort
- Formation of new fat in fat cells is inhibited
- Has a strong detoxifying effect
- Strengthens connective tissue

Quinoa Seed extract: prevents fat supply and fat storage, improves lymph drainage.

Amino acid (Proline): prevents fat supply, prevents fat storage, converts fat into cellular energy, removes existing fat.

Lipopeptide: converts fat into energy.

Double double double chin, belly, arms legs (local fat deposits)



MANNIC



THANKS!